

***DESIGN, PRODUCTION AND ASSEMBLY OF
ALUMINIUM, PVC AND STEEL CONSTRUCTIONS,
CURTAIN WALLS, ALUMINIUM AND PVC WINDOWS
AND DOORS, VENTILATED FACADES, COMPOSITE
MATERIALS, CERAMICS, HPL AND ETERNIT FAÇADE
CLADDING. GLAZING***



CERTIFICATE OF REGISTRATION

This is to certify that:

TAL Engineering Ltd

Kazichene, Industrial complex, Kazichene –West, Sofia 1532, Bulgaria

operates a

QUALITY MANAGEMENT SYSTEM

which complies with the requirements of
EN ISO 9001:2008

for the following scope

The registration covers the Quality Management System for the design, production and assembly of aluminium, PVC and steel constructions, curtain walls, aluminium and PVC windows and doors, facade cladding of composite elements, ceramics, HPL and other panels, the provision of glazing and powder coating.

Certificate No: QEC27289

Issued: 22 December 2009
Expires: 17 December 2012

Originally Certified: 18 December 2009
Current Certification: 18 December 2009



Alex Ezrakhovich
General Manager – Certification Services



Duncan Lilley
Global Head – Assurance Services



ISO 9001



Registered by:

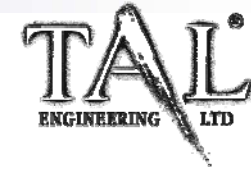
SAI Global Certification Services Pty Ltd (ACN 108 718 889) 286 Sussex Street Sydney NSW 2000 Australia with SAI Global Limited 286 Sussex Street Sydney NSW 2000 Australia ("SAI Global") and subject to the SAI Global Terms and Conditions for Certification. While all due care and skill was exercised in carrying out this assessment, SAI Global accepts responsibility only for proven negligence. This certificate remains the property of SAI Global and must be returned to SAI Global upon its request. To verify that this certificate is current please refer to SAI Global On-Line Certification register at <http://www.sai-global.com>



SAI GLOBAL
INFORM. INSPIRE. IMPROVE.



Company



Since its establishment in 1998, TAL ENGINEERING Ltd works successfully in the field of façade construction.

Our competence covers wide range of services including consulting, planning, delivery, professional and proper assembly of constructions made of aluminum, PVC and steel. We produce and install aluminum and PVC doors and windows, unitised façades, classic mullion/transom facades, solar systems, façade cladding of ceramics, wood panels, fiber cement board, aluminum composite panels etc.

TAL ENGINEERING Ltd employs about 250 skilled personnel. Our team of designers, technicians, manufacturing and assembling staff is guarantee for the timely execution of our contracts.

TAL ENGINEERING Ltd has its own design department, where qualified engineers can provide competent assistance to our clients in due time. In order to achieve best possible solution, without compromise with the highest quality, for the projects of our clients we work with them in close cooperation.

Our purchasing department is working with carefully selected international partner companies to ensure deliveries with consistently high quality of products and competitive prices - no matter how large or unusual your façade project is.

We manufacture façades, doors and windows in our plant in Sofia, Bulgaria. TAL ENGINEERING Ltd has a modern production facility with specialized high-tech machinery for aluminum and PVC. Since 2006, TAL ENGINEERING Ltd operates also its own powder coating plant for aluminum and steel profiles.

Our integrated management system helps us to synchronize the work of all processes, perfectly with one another and provide efficient execution. With paramount importance for all products and processes is the quality assurance. Since 2009 we operate a quality management system which complies with the requirements of EN ISO 9001:2008. This is a guarantee for regular checks and optimization of the processes.

You can always trust on our professional project planning - each step is carefully prepared - from planning to complete execution. Thus we achieve the best results for each facade.



Partners



TAL ENGINEERING EOOD works in close partnership with leading European manufacturers such as :

SCHÜCO – aluminum and PVC systems

ETEM – aluminum profiles

JANSEN – steel structures

ETALBOND - aluminum composite panels

ALUCOBOND - aluminum composite panels

AGS FLAT GLASS EUROPE – glass manufacturer

SAINT-GOBAIN – glass manufacturer

INTERPANE – glass manufacturer

FISCHER - fastening elements

WÜRTH – fastening elements

DORMA –door hardware and automation solutions

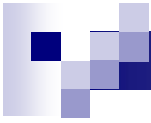
GEZE - door hardware

AGROB BUCHTAL – façade ceramic

ETERNIT - fibercement panels

PRODEMA – wood cladding

WAREMA – external lamella shutters



REFERENCE PROJECTS

PROJECT

HERMES PARK

Sofia, Bulgaria

Investor: "Carrefour Bulgaria"

European Trade Center

Architect: "AS-Iliev"



USED SYSTEMS:

"SCHÜCO" – SkyLine S 65

"SCHÜCO" – aluminum window system – thermal-isolated run AWS 65

"SCHÜCO" – curtain wall system FW 50+

"ALUMIL" – curtain wall system M6

Façade cladding with composite panels ETALBOND

Façade cladding HUNTER DOUGLAS

"SCHÜCO" – Skylight FW 50+



PROJECT HERMES PARK



PROJECT – Business Center BENCHMARK, Sofia, Bulgaria

Investor: BENCHMARK



USED SYSTEMS

"SCHÜCO"- aluminum window system – ROYAL S 65

"SCHÜCO" - suspended façade system FW 50+ SG with silicon joint

"SCHÜCO" - suspended façade system FW 50+

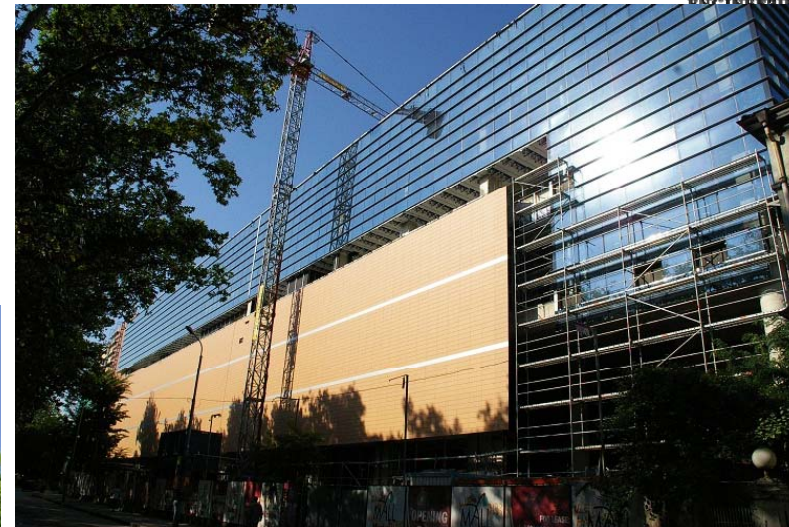
Façade cladding with aluminum composite panels Alpolic



PROJECT

MALL MARKOVO TEPE

Plovdiv, Bulgaria



USED SYSTEMS:

"SCHÜCO" – curtain wall system FW 50+

Façade cladding with composite panels ETALBOND

Ceramics Façade cladding AGROB BUCHTAL

PROJECT

LITEX and SOPHARMA TOWERS

Sofia, Bulgaria



USED SYSTEMS:

„Reynaers“ – element facade

Ceramics Façade cladding AGROB BUCHTAL

PROJECT

Multifunctional building ASTRA

Sofia, Bulgaria blv.

Investor: BUILD COMMERCE 2003 OOD

Architect: Architectural Office "LP Consult"



USED SYSTEMS

"SCHÜCO" – aluminum window system – thermal-isolated run ROYAL S 65

"SCHÜCO" – PVC window system run CORONA AS 60+ with external aluminum top

"SCHÜCO" – suspended façade system FW 50+

"ETEM" – aluminum window system run E-1000, Steelmet factory

Façade cladding with composite panels **Alpolic**



PROJECT

Multifunctional building ASTRA - Sofia, Bulgaria blv.



PROJECT

INFINITI showroom

Investor: Infiniti

Architect: arch. Stanislavov

USED SYSTEMS

"SCHÜCO" – curtain wall system FW 60+ SG with silicon joint

"SCHÜCO"- aluminum window system – thermal-isolated

run ROYAL S 65

"SCHÜCO"- vents run ROYAL 102 SK

WAREMA external lamella shutters

Façade cladding with aluminum composite panels Etalbond



PROJECT

Business Park Sofia - **Multifunctional Building 7**

Investor: Bavariastroy EAD

Contractor: Lindner Bavariastroy OOD

Architect: arch. Dimitrov



USED SYSTEMS

"SCHÜCO"- aluminum window system – ROYAL S 65

"SCHÜCO" - suspended façade system FW 50+ SG with silicon joint

"SCHÜCO" - suspended façade system FW 50+

"SCHÜCO"- vents run ROYAL 102 SK

Façade cladding with aluminum composite panels Etalbond

Façade tiles with ceramic tiles CREATON



PROJECT – Varna Towers , Varna

Investor: **Varna Towers**



USED SYSTEMS

Façade cladding with fibercement panels ETERNIT

"ETEM" – suspended façade system E-85 – Steelmet factory

"ETEM" – aluminum window system run E-45 – Steelmet factory

Façade cladding with aluminum composite panels ETALBOND

Glass roof - "SCHÜCO" - façade system FW 50+

PROJECT

Business Park Sofia - **Multifunctional Building 9**

Investor: Bavariastroy EAD

Contractor: Lindner Bavariastroy OOD

Architect: arch. Dimitrov

USED SYSTEMS

"SCHÜCO"- aluminum window system – ROYAL S 65

"SCHÜCO" - suspended façade system FW 50+ SG with silicon joint

"SCHÜCO" - suspended façade system FW 50+

"SCHÜCO"- vents run ROYAL 102 SK

WAREMA external lamella shutters

Façade cladding with aluminum composite panels Etalbond

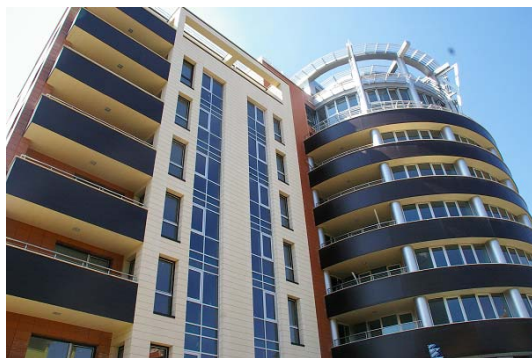
Façade tiling with ceramic tiles CREATON



PROJECT

ESTE HOME & SPA - Residential and Office Building

Sofia, Bulgaria



USED SYSTEMS:

EEM – aluminum window system

„SCHÜCO" – PVC window system run CORONA AS 70

Ceramics Façade cladding AGROB BUCHTAL

Façade cladding with composite panels ETALBOND

PROJECT

Benchmark 2 - Office Building

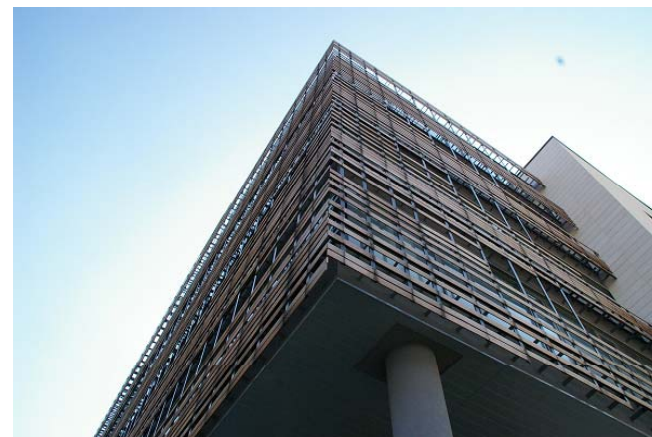
Rakovski Str., Sofia, Bulgaria



PROJECT

ABC Center - Office Building

Sofia, Bulgaria



PROJECT

Mall of Sofia – Sofia, Stamboliiski Blvd.

Contractor: Lindner Bulgaria OOD

Architect: arch. Plamen Nanov



USED SYSTEMS

"SCHÜCO" – suspended façade system FW 50+ SG with silicon joint

"SCHÜCO" - suspended façade system FW 50+

"SCHÜCO" - suspended façade system FW 50+S

"SCHÜCO"- thermal-isolated run ROYAL S 65

Façade tiling with ceramic tiles CREATON

Façade cladding with aluminum composite panels Etalbond



PROJECT

Business Park Sofia - **Multifunctional Building 8**

Contractor: Lindner Bavariastroy EAD

Architect: A&A Architects OOD



USED SYSTEMS

"SCHÜCO" - aluminum window system – thermal-isolated run ROYAL S 65

"SCHÜCO" - suspended façade system FW 50+ SG with silicon joint

"SCHÜCO" - suspended façade system FW 50+

"SCHÜCO" - vents run ROYAL 102 SK

Façade cladding with aluminum composite panels Etalbond

Façade tiling with ceramic tiles CREATON

WAREMA external lamella shutters



PROJECT

Multifunctional Building 1 – Business Park Sofia

Investor: Lindner Bavariastroy OOD

Contractor: Lindner Bavariastroy OOD

Architect: arch. Antonov



USED SYSTEMS

"ALUMIL"- façade system M 6 Solar Standart

"ALUMIL"- aluminum window system – thermal-isolated
run M 11 500

"ALUMIL"- aluminum window system run M 15 000

WAREMA external lamella shutters



PROJECT **Black Sea Rama**



USED SYSTEMS

"SCHÜCO " – PVC windows system run Corona CT 70 AS

ETEM - Aluminium system E-45

PROJECT

VGF- Office Building

Sofia, Bulgaria



PROJECT

Multifunctional Building PANORAMA APARTMENTS - Burgas

Investor: C B C AD

Architects: Architectural office I/O architects – arch. Georgi Katov, arch. Vyara Zheliazkova

GOLDEN VIZAR

The Project is awarded with First Award for Bulgarian Architecture in 2007th of European architectural awards "VIZAR" category "Projects and Realizations"

USED SYSTEMS

"ETEM" - aluminum window system run E-6400

"ETEM" - suspended façade system E-2000



PROJECT

Sprider Eurocity – Multifunctional complex

Sofia, Bulgaria Blvd.

Investor: Sprider Bulgaria EOOD

Contractor: MARKAN OOD

Architect: arch. Stanishev



USED SYSTEMS

"SCHÜCO" – suspended façade system FW 50+

"SCHÜCO"- aluminum window system, thermal-isolated run ROYAL S 65

"SCHÜCO"- PVC window system run CORONA AS 60+ with aluminum top

"ETEM" – aluminum window system run E-40 – Steelmet factory

"ETEM" – aluminum window system run E-1000 – Steelmet factory

PROJECT

Amrita - Residential Building

Sofia, Bulgaria



PROJECT

Residential and Office Building

Sofia, Opalchenska Str.

Investor: Bigla III Ltd.



USED SYSTEMS

"SCHÜCO"- PVC windows system run CORONA AS 60

"ETEM" – suspended façade system E-85 – Steelmet factory

"ETEM" – aluminum window system run E-45 – Steelmet factory

Façade cladding with aluminum composite panels ETALBOND



PROJECT

Residential Building, Sofia, Liulin

Contractor: Prima Building Company OOD

Investor: Bulgaria Property Management Team AD

Architects: Architectural Office I/O architects



SYSTEMS

"SCHÜCO"- PVC window system run CORONA AS 60 with alum. top

"ETEM" – aluminum window system run E-40 – Steelmet factory

PROJECT

VEGA Hotel - Sofia

Investor: VEGA EAD

Architect: arch. Mihailova



USED SYSTEMS

"SCHÜCO" – façade system FW 50+ SG with silicon joint

"SCHÜCO"- aluminum window system, thermal-isolation run ROYAL S 65

"SCHÜCO"- vents run ROYAL 102 SK

"SCHÜCO"- PVC window system run CORONA AS 60+ with alum. top

"ETEM" – suspended façade system run E-6400 – Steelmet factory

"ETEM" – aluminum window system run E-2000 – Steelmet factory

"ETEM" – aluminum window system run E-1100 – Steelmet factory



PROJECT

Administrative Building - NADIN

Sofia

Architect: arch. Zheko Tilev



USED SYSTEMS

“ETEM” – suspended façade system run E - 6400

“ETEM” – aluminum window system run E-40

Façade cladding with composite panels ETALBOND

PROJECT

Trade Complex - Sofia

Investor: Bulgaria Property Management Team AD

Contractor: BGL OOD



USED SYSTEMS

“EEM” – suspended façade system run E - 6400

“EEM” – aluminum window system run E-40

Automatic doors TORMAX

Façade cladding with composite panels ETALBOND



PROJECT

Bar Marseille

Sofia, Student's town

USED SYSTEMS

"SCHÜCO" – suspended façade system run FW 50 +SG

"SCHÜCO" – aluminum window system, thermal-isolated run ROYAL S 65

"SCHÜCO" – PVC windows system run CORONA AS 60+ with aluminum top



PROJECT

Administrative Building SOFIA CENTRAL PARK

Sofia, Sheinovo Str.

Investor: Sofia Central Park

Architect: arch. Iva Platikanova

USED SYSTEMS

"SCHÜCO" – suspended façade system run FW 50

"SCHÜCO" – aluminum window system, thermal-isolated run ROYAL S 65





PROJECT

Central Mall – Veliko Tarnovo

Investor: Densy Stroi OOD

Architect: Architectural bureau– Stanimir Mihailov



USED SYSTEM – Steelmet Factory

“ETEM” – façade system run VISTAWALL

“ETEM” – façade system run 6400

“ETEM” – aluminum windows run E 1100

“ETEM” - aluminum windows run E 2000



PROJECT

AUDI – Center - Sofia

Contractor: Miks Construction OOD



USED SYSTEMS

“SCHÜCO” – suspended façade system run FW 50 +

“SCHÜCO” – aluminum thermo-isolated system run ROYAL S 65

Façade cladding with aluminum composite panels ETALBOND



PROJECT

TOYOTA – Center - Sofia



PROJECT

BMW – Showroom

Sofia

Contractor: "Siconco Building" AD

Investor: "Kamor-Auto" EOOD

Architect: arch. Lipovedski, arch. Yankova



USED SYSTEM

"SCHÜCO" – suspended façade system run FW 50 +

"ETEM" – façade system run E-6400 – Steelmet factory

"ETEM" – aluminum windows system run E-40 – Steelmet factory

"ETEM" – aluminum windows system run S-1100 – Steelmet factory

Façade cladding with aluminum composite panels ETALBOND

PROJECT

Showroom Mercedes

Sofia, Rezbarska Str.

Contractor: BautechBul EOOD

Architect: arch. Barnekova



USED SYSTEMS

“SCHÜCO” – suspended façade system run FW 60+

“SCHÜCO” – aluminum thermo-isolated system run ROYAL S 65

Façade cladding with aluminum composite panels Etalbond





PROJECT

Showroom SUBARU

Architectural office – Serafimov Architects, Sofia

Investor: Radial

Architecture: Serafimov Architects

USED SYSTEMS

“ETEM” – suspended façade system run E-6400

“SCHÜCO” – suspended façade system run FW 50 +

“SCHÜCO” – aluminum windows system run Royal S65



PROJECT

Showroom Build A2, Sofia

Contractor: Build A2 EOOD

Architect: arch. Simeon Tzonkov

USED SYSTEMS

“SCHÜCO” – suspended façade system run FW 60 +

“SCHÜCO” – aluminum windows system Royal S 65

“ETEM” – aluminum windows system run E-40 – Steelmet factory

Façade cladding with aluminum composite panels ETALBOND



PROJECT

Showroom VW - Sofia

Investor & Contractor: Unitrade – X OOD



USED SYSTEMS

“SCHÜCO” – suspended façade system run FW 50 +

“ETEM” – aluminum windows system – Steelmet factory

Façade cladding with composite panels ETALBOND



PROJECT

Showroom VW, Porsche Sofia Iztok

Contractor: Miks Construction OOD

Architect: arch. Tz. Petrov



PROJECT

Business Park Sofia - Multifunctional Building 5

Investor: Lindner Bavariastroy OOD



USED SYSTEMS

“ETEM” – aluminum windows system run E-1000 – Steelmet factory

Façade cladding with aluminum composite panels ETALBOND

Façade tiling with ceramic tiles CREATON

PROJECT

Business Park Sofia - Multifunctional Building

Investor: Lindner Bulgaria EOOD



USED SYSTEMS

“SCHÜCO” –façade system run FW 50 +

“ETEM” – aluminum windows system E-40

Façade tiling with wooden panels PRODEMA



PROJECT

Storehouse TCHAIKA PHARMA AD

Plovdiv

Contractor: MARKAN OOD



SYSTEMS

"SCHÜCO" – suspended façade system run FW 50+

"SCHÜCO"- thermo-isolated windows system run ROYAL S 65

"SCHÜCO"- vents system run ROYAL 102 PAF

"ETEM" – aluminum windows system run E-1100

Automatic sliding door TORMAX



PROJECT

Administrative Buildings TITAN Factory

Zlatna Panega

Investor: Podemengineering OOD

Architect: arch. Philip Zahariev



USED SYSTEMS

"ETEM" – aluminum windows system run E-40 – Steelmet factory

"ETEM" – suspended façade system run E-6400 – Steelmet factory

Façade cladding with aluminum composite panels ETALBOND



PROJECT

Administrative Building AQUACHIM, Sofia

Investor: Aquachim EOOD



USED SYSTEMS

"SCHÜCO" – suspended façade system run FW 50+

"ETEM" – aluminum windows system run E-40 –



PROJECT

Furniture showroom INTERIUS, Sofia

Architectural project: arch. Velev



USED SYSTEMS

“SCHÜCO” – suspended façade system run FW 50 +

“SCHÜCO” – thermo-isolated aluminum system run ROYAL S 65

Horizontal sunshields system HUNTER DOUGLAS, run 84R

PROJECT

Illuminants Showroom ORION

Sofia, Knyazhevo area

Contractor: MARKAN OOD



USED SYSTEMS

“SCHÜCO” – facade system run FW 50 +

“SCHÜCO” – thermo-isolated aluminum windows system run ROYAL S 65

“METRA” – system combination between aluminum and wood

Façade cladding with aluminum composite panels ETALBOND

PROJECT

Residential Building

Sofia, Oborishte Str.

Investor: Bulgarian Construction House AD



USED SYSTEMS

"SCHÜCO" – suspended façade system run FW 50 +

"SCHÜCO" – aluminum windows system run Royal S 65

"ETEM" – aluminum windows system run E-40 – Steelmet factory

"ETEM" – aluminum windows system run E-1000 – Steelmet factory

PROJECT

Residential complex - RESIDENTIAL PARK SOFIA

Investor: Lindner Immobilien Management EOOD



USED SYSTEMS

"SCHÜCO" – PVC windows system run Corona AS 60+ with ALU top

"SCHÜCO" – aluminum windows system run Royal S 65

PROJECTS

Residential complex – Sunny Hill, Burgas

Investor: Sunny Hill EAD

Contractor: Sregi OOD



SYSTEMS

"SCHÜCO" – PVC windows system run Corona CT 70 AS

Façade tiling with ceramic tiles CREATON

PROJECT

Vacation village "St. Thomas"

Cape HUMATA, Arkutino aria, Municipality of Sozopol

Investor: "GBS - Invest" EAD



USED SYSTEMS

"SCHÜCO" – PVC windows system run Corona AS 60

"SCHÜCO" – ALU windows system run ROYAL RS 65

"SCHÜCO" – ALU windows sliding system run HS 120

"ETEM" – ALU windows system run E-45, Steelmet factory

"ETEM" – suspended façade system run E-6400, Steelmet factory



PROJECT

Residential complex – Tzarigradski Complex

Sofia, Druzhba area

Investor: Sofia Building Company OOD



SYSTEMS

"SCHÜCO" – PVC windows system run Corona AS 60

"ETEM" – aluminum windows system run E-40 - Steelmet

"ETEM" – aluminum windows system run E-1000 - Steelmet

"ETEM" – aluminum windows system run E-1600 - Steelmet



PROJECT

Residential Building, Sofia, South Park Area

Investor & Contractor: BIGLA III OOD

Architect: arch. Dora Kostova



PROJECT

Residential Building, Sofia, Pimen Zografski Str.

Investor & Contractor: BIGLA III OOD

USED SYSTEMS

"SCHÜCO" – suspended façade system run FW 50 +

"EEM" – aluminum window system run E-40 – Steelmet factory

"EEM" – aluminum window system run E-1000 – Steelmet factory

Façade cladding with aluminum composite panels ETALBOND





PROJECT

Administrative Building HÄFELE, Sofia

Contractor: MARKAN OOD

Investor: HÄFELE

Architecture: arch. Panov



USED SYSTEMS

“SCHÜCO” – suspended façade system run FW 50 +

“SCHÜCO” – thermo-isolated windows system run ROYAL S 65

“SCHÜCO” – vents system run ROYAL S 102 PAF

PROJECT

Administrative Building VIP TRADING, Sofia

Contractor: Bereta Trading OOD

Architecture: arch. Stoichev

USED SYSTEMS

“SCHÜCO” – suspended façade system run FW 50

“ETEM” – aluminum windows system run E-6500

Façade cladding with composite panels ETALBOND



PROJECT

TRIADA HOTEL, Sofia

Contractor: Proxima 99 AD

Architecture: arch. Osenski

arch. Troleva



USED SYSTEMS

“SCHÜCO” – suspended façade system run FW 50 +

“SCHÜCO” – aluminum thermo-isolated windows system run ROYAL S 65

PROJECT

OASIS HOTEL Sunny Beach Resort Estate

Contractor: Dechi – A S P OOD

Architecture: arch. P. Kubadinski



USED SYSTEMS

“SCHÜCO” – suspended façade system run FW 50 +

“SCHÜCO” – PVC windows system run CORONA AS 60

“ETEM” – suspended façade system run E-6400 - Steelmet

PROJECT

Administrative Building RISK ELECTRONICS, Varna

Investor: Risk Electronics OOD



USED SYSTEMS

“SCHÜCO” – suspended façade system run FW 60 +

“SCHÜCO” – vents system run ROYAL S 70BS

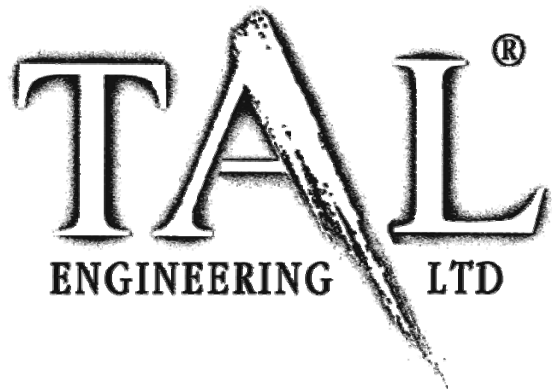
“SCHÜCO” – thermo-isolated windows system run ROYAL S 65

“ETEM” – aluminum windows system run E-6500 – Steelmet factory

Façade cladding with aluminum composite panels ETALBOND



CONTACTS



HEAD OFFICE:

Kazichene, Industrial complex Kazichene -West
Sofia 1532
Bulgaria

phone: + 359 2 419 19 19; + 359 89 990 22 88

fax: + 359 2 973 42 23

E-mail: office@talengineering.com

URL: <http://www.talengineering.com>

Office PLOVDIV:

1a Bulair Str, office 1a
Plovdiv 4000

phone/fax: + 359 32 62 36 54

E-mail: plovdiv@talengineering.com

Office BURGAS:

5 Adam Mitzkevich Str.
Burgas 8000

phone/ fax: + 358 56 82 88 11

E-mail: burgas@talengineering.com

Office VARNA:

58 Dubrovnik Str.
Varna 9000

phone/ fax: +359 52 786 179

E-mail: varna@talengineering.com

THANK YOU FOR YOUR ATTENTION!